



Dear Uncle BOB-

I was lurking in the office late on a Friday afternoon in June when I overheard a conversation that I just have to tell you about. It was the same day that

phone calls were made to every member regarding the challenge for the fiscal year-end – the business manager must have been so busy making all those calls! I can't imagine. Anyway, not long after the calls were completed the person in the office received a phone call from someone who was very upset – I could just tell. The caller wanted to know why the message was sent to them? Why were we calling people who already give to the church to

tell them that we still need more? Couldn't we separate them out from the list and call them with a different message – a "thank you" message?

Well, I just wanted to grab that phone and say a few things to this caller. It was crazy that someone would get so upset over this attempt to keep everyone informed. No matter how the message about money would have been communicated, at least one person would not have liked it – that's the way it's always been in the church. I know that for a fact! I just wish everyone would focus their "church energy" on more important things than a simple phone call that was intended to be helpful.

See you in church!

BECC Update

The Bethany Early Childhood Center (BECC) has been providing excellence in early childhood education since August, 1995. The program has grown over the years to be one of the most important outreach ministries of Bethany Lutheran Church as most of the families that participate in the program do not regularly attend or participate in activities at Bethany. The Director of BECC, Susan Swank, has done a great job managing all aspects of the program and the teaching staff continues to demonstrate their commitment to the students and early childhood education each and every day.



Starting with the fall semester this year, the program will offer a Parents Day Out program for the first time. It is a two-day per week program (Mondays and Thursdays) from 9am – 1pm. Although the first day will be at the end of August, the program is full as of August 1 and there is a waiting list for others to join the program if/when a vacancy occurs. The PDO will utilize Bethany's nursery room, which is ideally suited for such a program and not otherwise used on Mondays and Thursdays.

Spread the word about BECC whenever and wherever you can! It is by far one of the best values in early childhood education in the Denver area, and a personal referral is the most efficient marketing tool we have.

The BUSINESS of BETHANY



A Quarterly Newsletter from Bethany Administration

Second Quarter 2011

In this Issue:

Page 1

- 2010/11 General Fund Update
- Did You Know?

Page 2

- Facilities Update
- Now Entering - The Year of the General Fund!
- Who's Who? Mike Duvall

Page 3

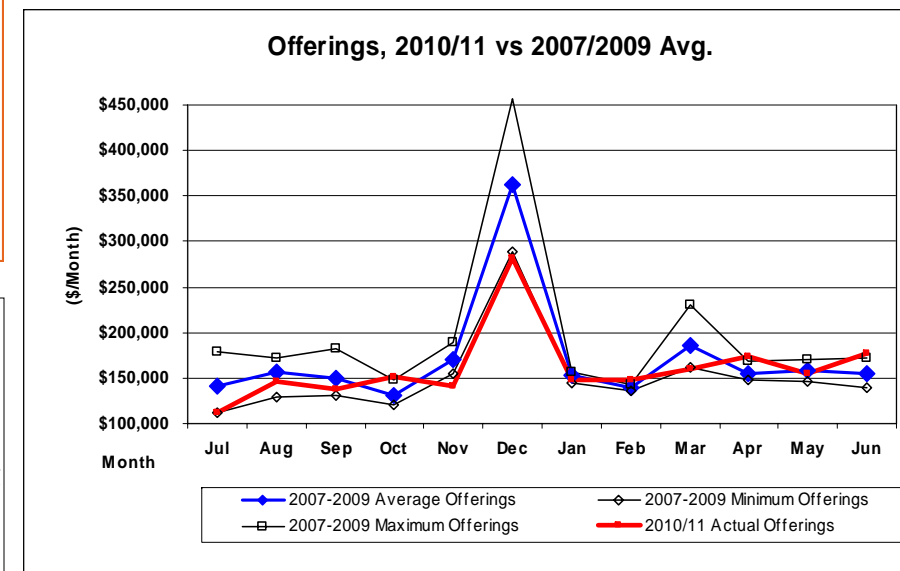
- Council Corner: Creating a Vision for Bethany
- Debt Reduction & Founders Campaign Savings

Page 4

- From the Church Mouse
- BECC Update

2010/11 General Fund Update

We reached our goal! Thank you to everyone who contributed to the General Fund in 2010/11. With a strong finish in June, we were able to reach the budgeted goal of \$1.95 million in receipts. The chart below summarizes the monthly contributions in 2010/11 compared to the minimum, maximum and average monthly contribution in the past three years. As you can see, despite a low level of giving in December we were able to make up this deficit from January through June. **Thank you, thank you, thank you for your continued support of the General Fund.**



Did You Know?

A simple rule of thumb can help you track our progress toward meeting our goal of \$2 million in contributions for the 2011/12 fiscal year. We need to average \$150,000 per month plus an additional \$150,000 during Advent/Christmas and \$50,000 for Lent/Holy Week/Easter.

On the expense side, we ended the 2010/2011 fiscal year at \$1.945 million, less than the \$1.95 million budgeted and also less than total contributions thereby provided a net gain of \$5,000. The \$1.945 million in actual expenses included \$1.612 million in operating expenses (including \$195,000 for benevolence) and \$333,000 for capital expenditures (including the principal payment on our mortgage and contributions to the Founders Campaign Savings fund).

Facilities Update

The Founders Campaign Savings continues to provide funding for property improvement projects at Bethany. The next big project to be completed will be new cupboards and counter tops in the kitchen. This is a long overdue project as the kitchen has been used much more extensively than originally designed or envisioned. Chris Charron, Bethany's Kitchen Supervisor, uses it every day to prepare a morning snack, lunch and afternoon snack for the children at BECC. In addition, the kitchen is used to prepare and deliver meals for our weekly Senior Center program, many special events throughout the year, and funeral receptions. It is one of the busiest areas in the building on a regular basis. Please check out the new look in the kitchen after Aug 21.

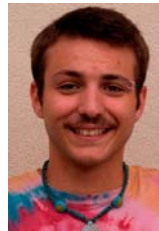
The next project being considered by the Facilities Team is new carpet in the Sanctuary. The current carpet has worn well but has been in place for more than 20 years and is starting to fall apart and show wear and tear. The selection of the new carpet has been a significant chore, but the Facilities Team will be presented with the staff recommendation in August.

Now Entering: The Year of the General Fund!

With the Capital Campaign, Balloon Payments and Founders Campaign behind us, the Bethany staff and lay leadership team has declared "The Year of the General Fund." In the midst of special projects, such as a building campaign or debt reduction, it is often easy for a congregation to ignore the "core" of the financial resource for a church – the General Fund. It is through this fund that all of the ministries, program and activities are provided including crisis ministry, Biblical study and education for all ages, faith formation and spiritual development, outreach and benevolence, building operating costs and debt reduction. Everything that we do at Bethany is supported, either directly or indirectly, by the General Fund. With this understanding, it is reasonable to expect that everyone will contribute to the General Fund on a regular basis. The greater the support of the General Fund, the more we are able to do in all of our areas of ministry and stewardship.

Who's Who? Mike Duvall

Meet Mike Duvall, a member of Bethany's custodial team since October, 2010. Mike is primarily responsible for cleaning the early childhood center (BECC) but also helps out around the church on evenings and weekends. He is a great worker and an all-around nice guy! This is what Mike would like you to know about himself:



"I was born into a huge Italian Catholic family, with 4 sisters and 4 brothers. I attended The Shrine of St. Annes Catholic School from grades K-8. My 6th grade volleyball team won the state championship. Although most of my family attended Holy Family High School, I ended up going to Wheat Ridge High, graduating in 2007. Since the age of 8, I was on a swim team, as well as other sports teams. I reached my peak in swimming in high school where I set a personal record of 22 seconds in a 50 meter race. When I

Council Corner: Creating a Vision for Bethany

The Bethany Church Council meets every fourth Tuesday of the month at 7pm in Room 210 to conduct the business of the church. The primary emphasis of the Board this year has been the Vision project that began in early 2011 with a leadership retreat led by Pastor Rick Rouse, our vision consultant. This initial workshop was informative and foundational in establishing the need for a clear vision. Since this workshop, the Council has been reading and discussing a book about vision, Borderland Churches by Gary V. Nelson. The book is sub-titled "A Congregation's Introduction to Missional Living." This has provided a context for the Council to address a vision of Bethany that is more externally focused than we have been in the past. How can this happen? The Vision Team will be conducting sessions with small groups at Bethany in the fall to gather more input for the vision development process. A follow-up session with Pastor Rouse is scheduled for early November.

(Who's Who continued from page 2)

was 16, I started teaching swim lessons, and one of my first classes was a lone child with Down's syndrome. After just two weeks he went from no swimming skills to placing in the Jr. Special Olympics. In the summer of 2010, I joined a few other instructors to set a world record for Largest Swim class. I couldn't tell you how many kids were there, but we had the giant wave pool at Water World full! I also may be the biggest Beatles fan that was born after the 60's. I own all their records in original vinyl and on CD, and because of that I can sing every Beatles song. I'm such a huge fan that I have most of their solo music as well. Paul McCartney is by far my favorite of the four, and I went to his concert last summer. I somehow wondered back stage looking for a t-shirt stand and saw a rack of guitars and his signature Hofner bass before security told us to leave."

Thanks, Mike, for all you do for Bethany and especially the BECC children and staff!

Debt Reduction and Founders Campaign Savings

As of June 30, 2011, the outstanding debt for Bethany was \$1.6 million with more than \$40,000 in the Debt Reduction Fund to be applied to the principal at our next pre-payment in January, 2012. Due to the reduction of this outstanding debt from \$5 million in 2005, we were able to save nearly \$200,000 in the Founders Campaign Savings Fund this past fiscal year. This savings has been used for program, outreach, property and additional debt reduction as agreed when the Founders Campaign was formed in 2008.

By the end of this year, a plan will be developed to outline steps to eliminate this deficit over the next few years or soon as reasonably possible. While everyone would like to be rid of this financial burden, the staff and lay leadership are very aware of the potential sensitivities surrounding an additional campaign for this purpose. With a sustained emphasis on the General Fund, there is an expectation that a special campaign should not be necessary. Let's all work together to prove this expectation correct!