



 **Donuts to Dollars**
Session 1

March 14, 2010

Bethany Lutheran Church
4500 E. Hampden Ave.
Cherry Hills Village, CO 80113
303-758-2820

Internet: www.bethany-denver.org



4 Keys

- Tradition
- Devotion
- Service
- Caring Conversation





Agenda

- BLC Mission, Vision, Goals
- 2010 Themes
- Just the Facts
- Overview of BLC Financial Framework
- Analysis of General Fund Income
- Approved 2009/10 Budget and Components
- Founders Campaign and Savings
- 2010/2011 Budget Challenge
- Key Strategies for 2010/2011
- Timeline for 2010/2011 Budget Preparation & Approval





Bethany Lutheran Church is a Christian community, rooted in the Gospel, and focused on sharing God's grace and love in Jesus Christ with all people.

Our Mission (why we exist)

- Gather people to worship, hear and share
- Prepare them for caring and service
- Energize them to witness and reach out
- Connect them with opportunities and needs
- Enable these actions with staff and resources

Our Vision (what we strive for)

- An ELCA church which is pre-eminent in equipping its members to live and witness as the body of Christ, and
- A Christian leader in caring for and serving others in the Denver area and beyond

Our Goals (how we work)

- Worship Meaningfully in the Lutheran tradition, with a variety of liturgical and musical experiences
- Grow Spiritually in diverse Christian education programs, for all levels of understanding and stages of life
- Serve Purposefully those in need who live in our local, regional and global communities
- Share Fellowship with one another that builds connections and strengthens bonds
- Witness Intentionally to all those who seek God and a welcoming, embracing church





Vibrant Faith/Book of Faith...2010 Themes

- **Bethany is a Book of Faith congregation of the ELCA** (as adopted by Council, Sept 2009)
 - Committed to live in and from the Word of God in all our meetings, assemblies and events
 - Leadership to set an example, witness to others, teach the faith of this church
 - All members of Bethany covenant to begin a regular practice of Bible Study and prayer
- **Bread for the Journey – Theme for Lent 2010**
 - Labyrinth and art crafts, stretch and pray, Father Dominic's Bake and Be Blessed, noon worship and soup, Taize worship, pretzel baking, 1st Communion training
 - Lenten Companions (mentors and youth) for 5 weeks
- **Faith Formation Team**
 - Telling success stories and Equipping, Empowering and Unleashing individuals and families in Faith Formation
- **Fellowship Team**
 - Instituted Greeter Program, Fellowship Pads to track members and visitors
- **Adult Learning Team**
 - Offering Lutheranism 201, The Good Book, Disciple I and II, and a full plate of learning opportunities
- **Worship & Music Team**
 - Led class on The Sunday Assembly: Evangelical Lutheran Worship, studying worship practices
- **Organist Search Committee**
 - Accepting applications for position
- **Financial Task Force**
 - Evaluate budget and financial issues on behalf of the Church Council.
- **Communications Task Force**
 - A major effort to understand and improve our communications at Bethany!





Vibrant Faith/Book of Faith...2010 Themes

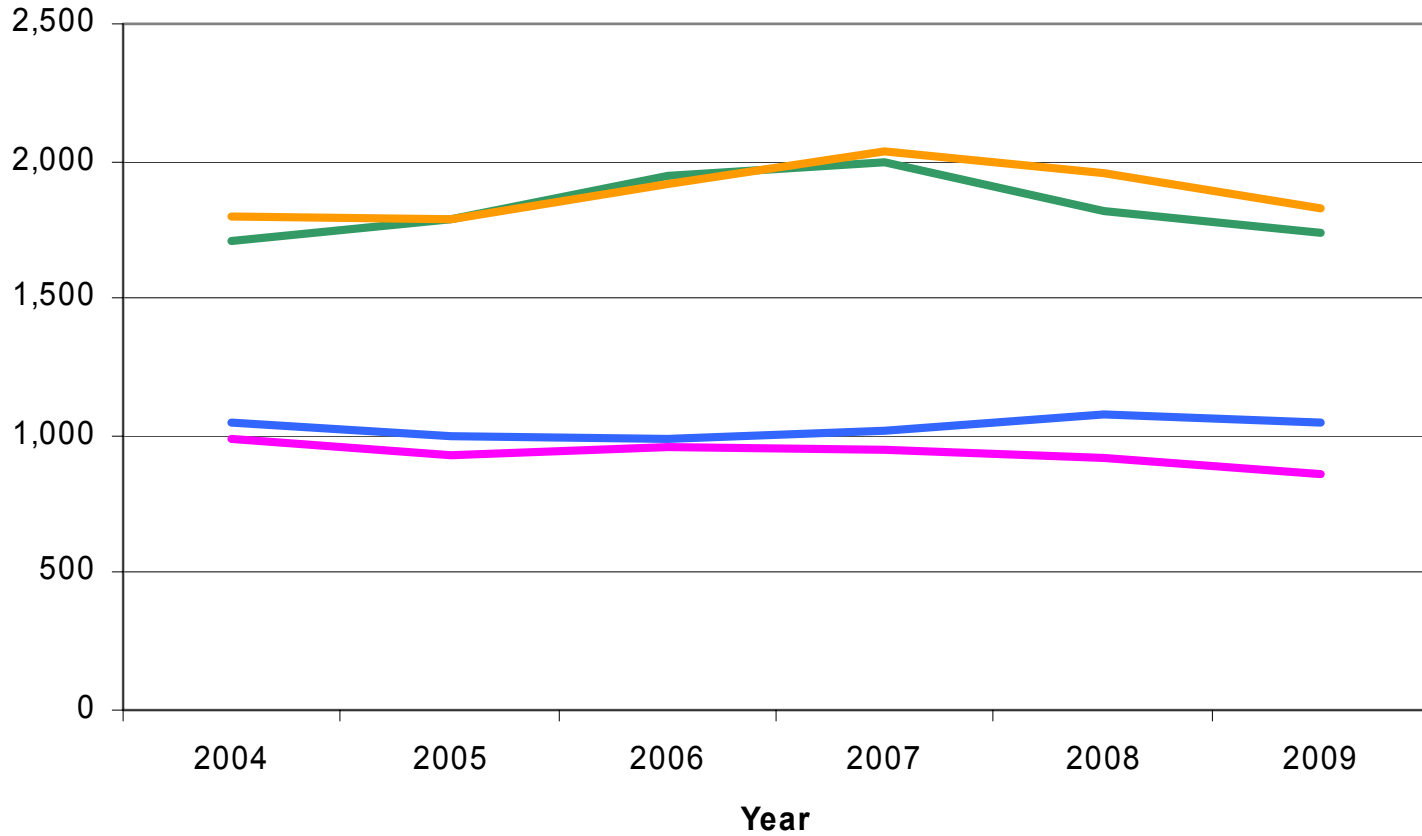
- **Stewardship Ministry Team**
 - New leadership with renewed focus and energy on all aspects of stewardship
- **Family Ministry**
 - Continues to grow and thrive – a shining example of “member-led, staff-enhanced
- **Connect! & Vertical Life**
 - New youth programs continue to attract and hold on average 60 youth per week in relational, theological and service oriented programming
- **Godly Play & Kids Light**
 - Weekly programs in rotational model and developmental lessons hold children in faith formation.
- **XYZ & Young at Heart**
 - Senior programming continues
- **Congregational Retreats**
 - Lenten Retreat - Studied The Good Book – our interpretive Biblical lenses and the intersection with cultural issues
 - Family Retreat – a program highlight for many Bethany families
- **F.A.I.T.H. Conference: ‘Faith Alive In The Home’**
 - Synod event hosted at Bethany April 23-24. Learn the fundamentals and fill your toolbox!
- **Outreach Initiatives**
 - Bail Townhomes Project: Habitat project to build 24 townhomes
 - Lutheran Malaria Initiative: ELCA effort to raise funds for malaria
 - Soles4Souls: Donate your shoes on Easter Sunday and go Barefoot4Haiti!





Just the Facts

Worship and General Fund Metrics



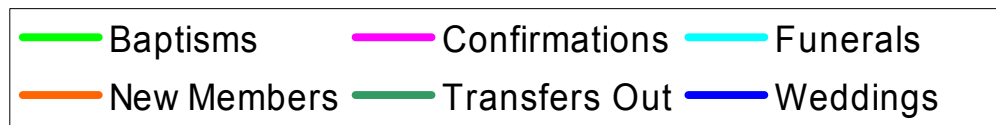
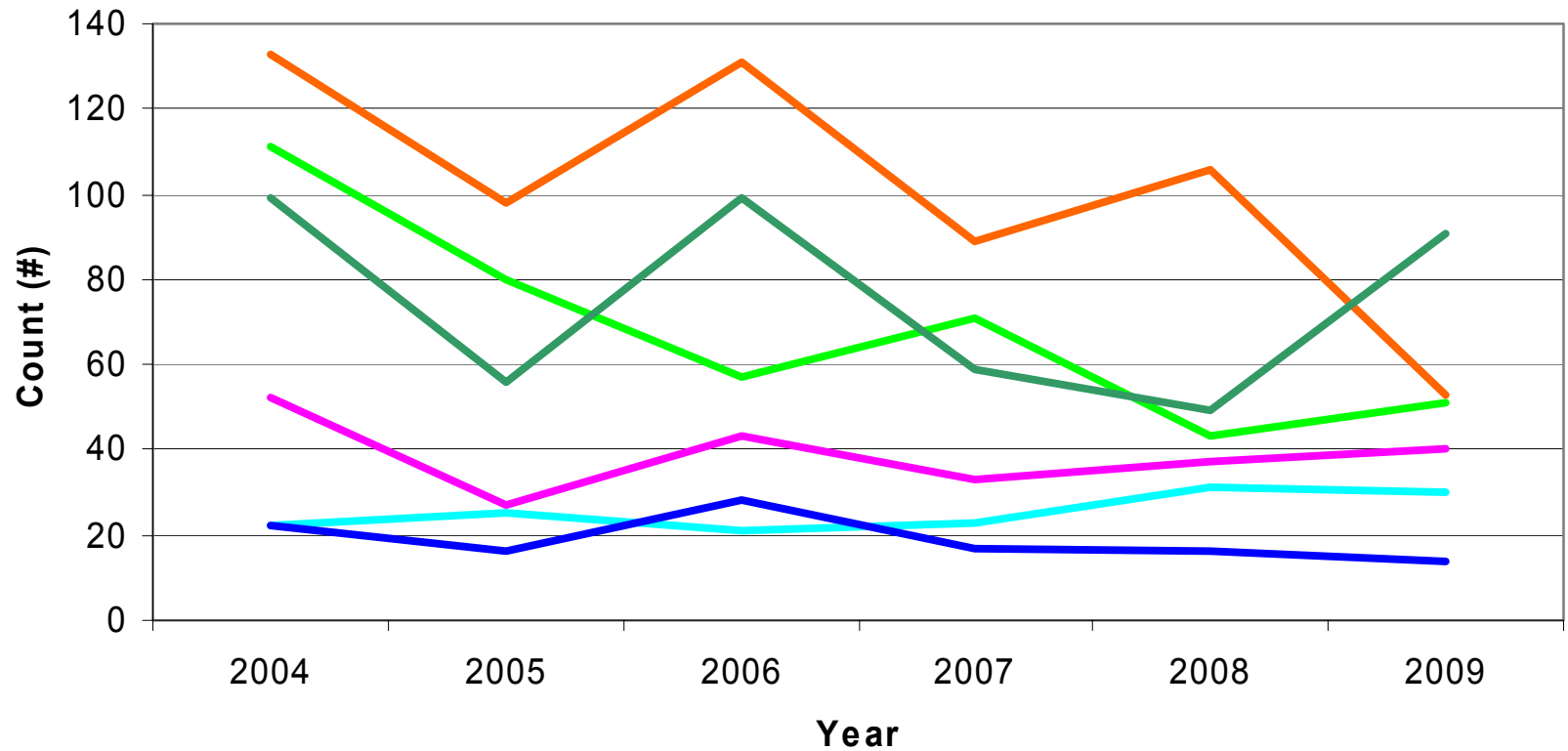
— Avg Weekly Worship — # of Givers — Avg Gift (\$/yr) — Annual Contributions (\$K)





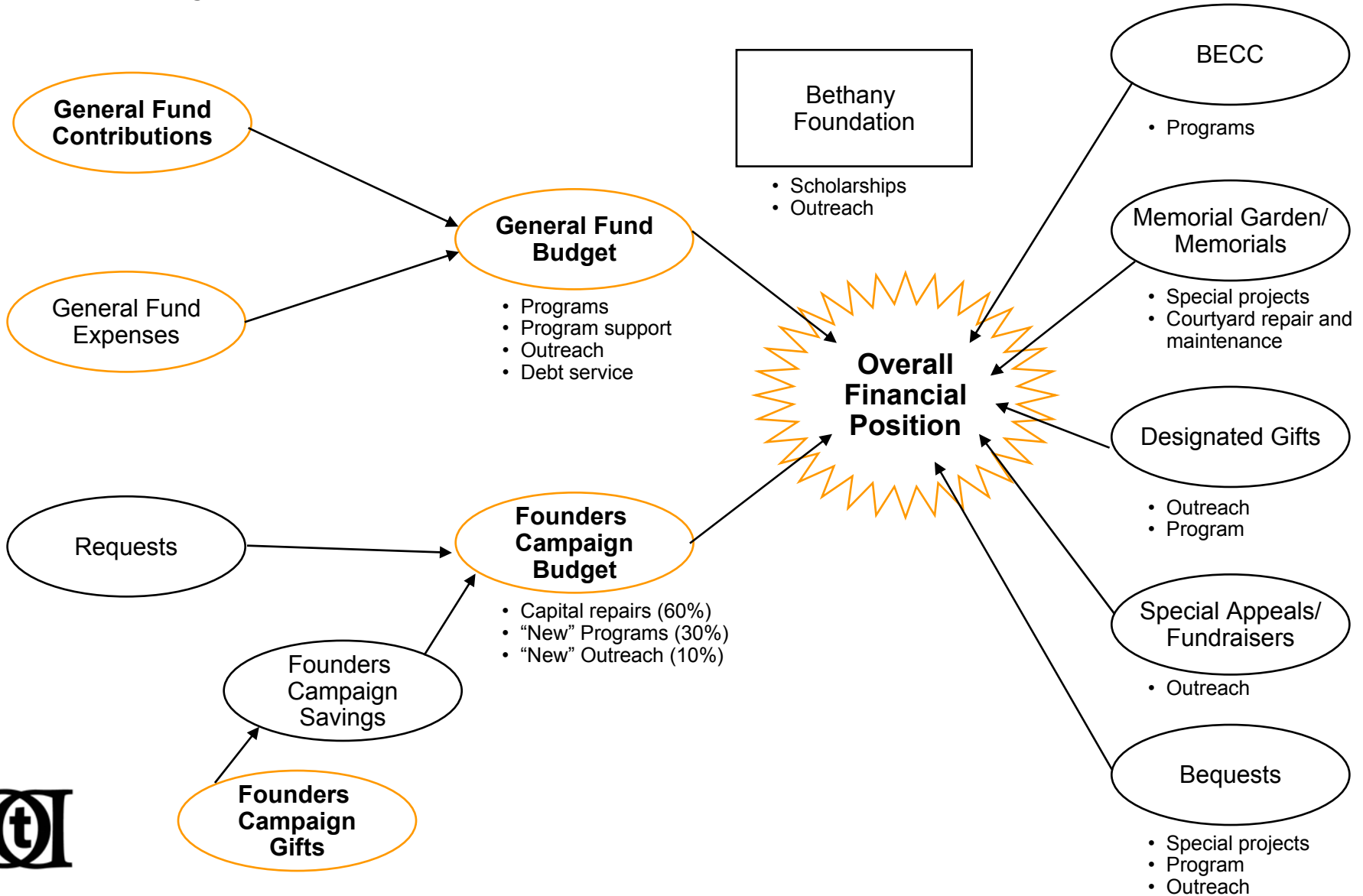
Just the Facts

Program Metrics





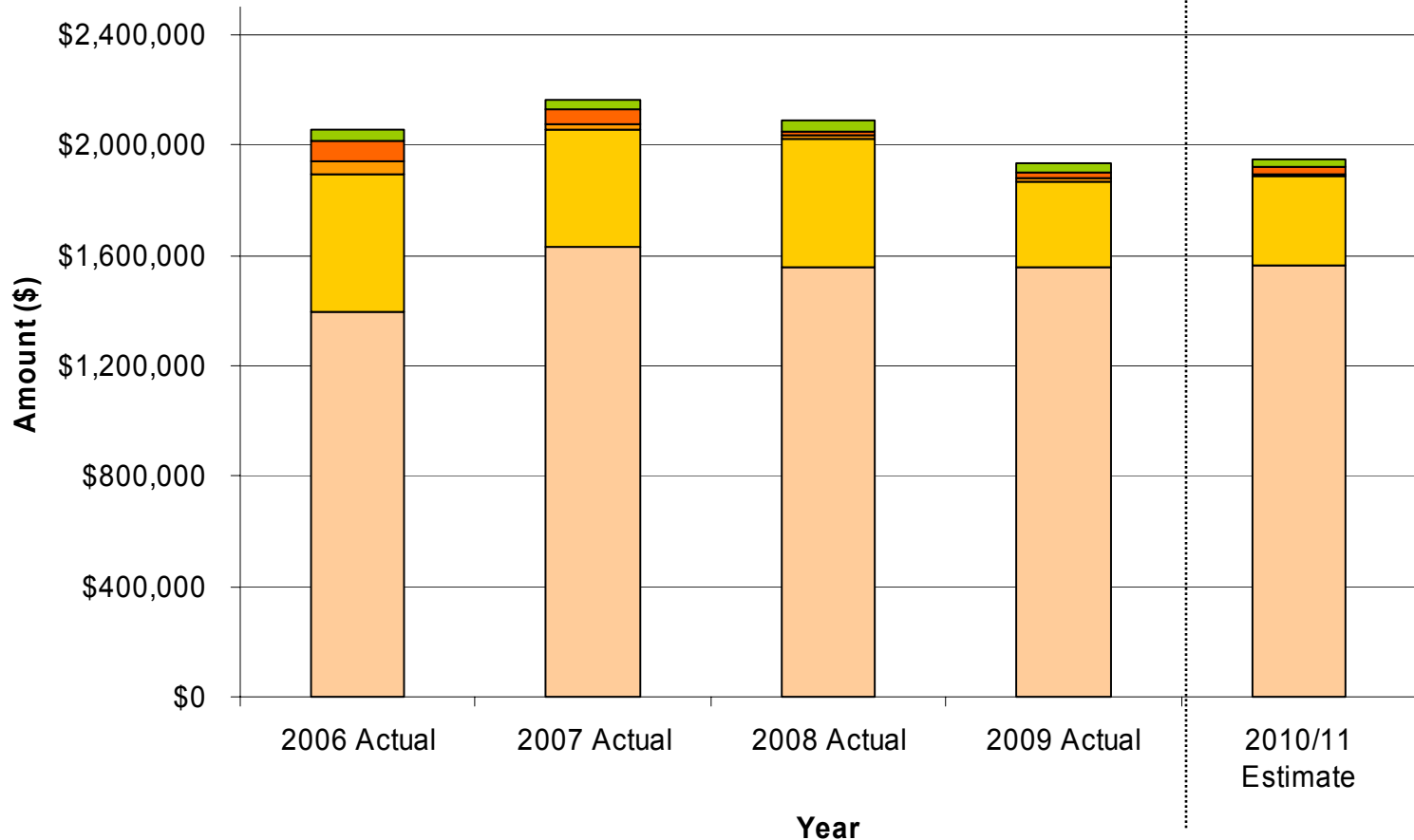
Bethany Financial Structure





Analysis of General Fund Contributions

Contribution Summary



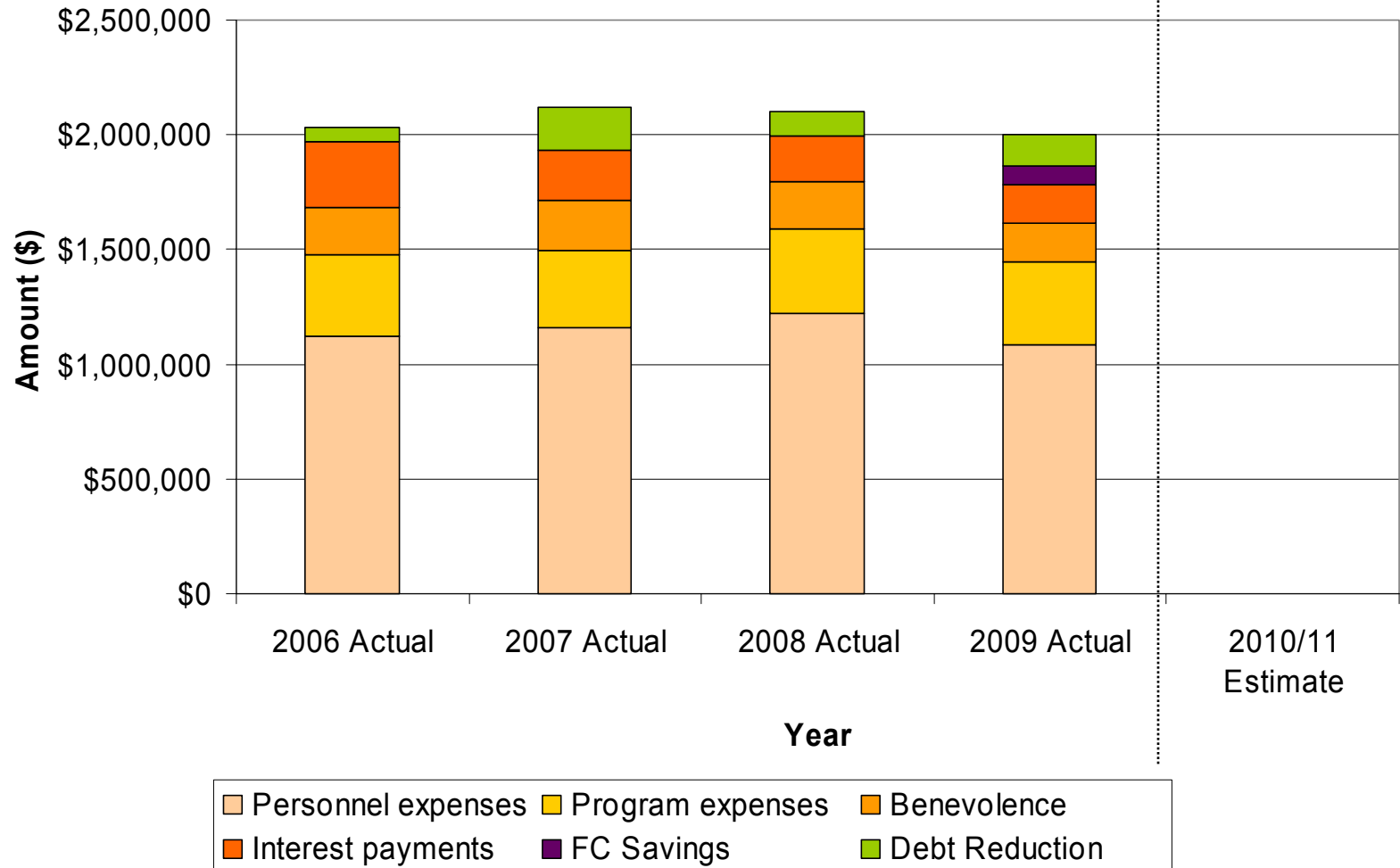
Legend: Pledged Giving (light orange), Non-Pledged Giving (yellow), Non-Members (orange), Special Services (dark orange), Loose Offering (green)





Analysis of General Fund Expenses

General Fund Expenses 2006-2009





The Founders Campaign – what a gift!

- Founders Campaign Case Statement reads:

“...it is expected that the savings resulting from this Founders Campaign would be deployed in ways that have the greatest impact on our goals and be distributed across these three areas. For example, the savings could be used to:

- Establish, for the first time, a vital funded reserve for capital maintenance and repair;
- Expand programs in education, evangelism, outreach, service and witnessing; and
- Grow our funding for our outreach ministries from the General Fund.

As we pursue this vision through the implementation of the Founders Campaign, it is our hope and prayer that every member of Bethany will join us in meeting this challenge. **Every ONE of us and every SINGLE dollar will make a difference in achieving our mission, vision and goals for the sake of God’s Work - Our Hands.”**





Status of Founders Campaign and Savings

- Approved property projects
 - Shading for the Sanctuary windows
 - New roof for the administrative offices – completed in February
 - Pending request for additional roof, concrete and parking lot work
- Approved program projects
 - Seminary intern program
 - Summer Sunday School/Vacation Bible School
 - Health & Wellness program
- Approved outreach projects
 - Pending request for shipping costs for Soles4Souls
- Expected FC Savings status thru June 2010 (assuming approval of pending requests):

Thru June 30 2010

	<i>Allocated</i>	<i>Approved</i>	<i>Balance</i>
Property	\$108,563	\$76,086	\$32,477
Program	\$54,282	\$43,000	\$11,282
Outreach	\$18,094	\$1,000	\$17,094
Debt Reduction	\$76,676	\$76,676	\$0
	\$257,615	\$196,762	\$60,853





Proposed structure of the 2010/11 Budget Challenge

	Budget 2009/10	Projected 2009/10	Proposed 2010/11	%chg
Benevolence	\$258,000	\$243,529	\$195,000	-19.93%
Personnel	\$984,935	\$969,483	\$970,000	0.05%
Expenses - Program	\$102,311	\$92,197	\$102,311	10.97%
Expenses - Support	\$261,654	\$271,602	\$245,000	-9.79%
Debt Service	\$257,161	\$234,588	\$202,004	-13.89%
FC Savings	\$235,939	\$257,624	\$235,540	-8.57%
	\$2,100,000	\$2,069,023	\$1,950,000	-5.75%

- Additional “costs” in 2009/10 budget due to the 6-month transitional budget do not carry over into 2010/11 – good news!
- FC Savings will continue to supplement program, property and outreach beyond what is budgeted for in the General Fund
- Key decisions for Council regarding allocation of expenses between General Fund, Founders Campaign Savings and other sources of funding
- Council is mindful of the need to maintain fiscal responsibility and flexibility





Key Strategies for 2009/10 continue into 2010/11

- Membership Growth and Stewardship - Fellowship Team (target new members), Equip, Empower & Unleash and Spiritual Gift Inventories (target members not currently pledging and/or giving, increase numbers of pledging members), etc.
- Bethany programs continue to be evaluated to determine alignment with the Mission, Vision and Goals for prioritization.
- Continue with Founder's Campaign emphasis to reduce debt!





Timeline for 2010/11 Budget Preparation and Approval

- Sunday, March 14 – DtD meeting #1
- Tuesday, March 23 – Budget detail presented to Council as submitted by staff; Council discussion and agreement regarding budget principles
- Sunday, April 11 – DtD meeting #2
- Tuesday, April 13 – Final draft budget presented to Executive Committee
- Tuesday, April 27 – Final budget presented to Council for approval
- Sunday, May 2 – DtD meeting #3
- Friday, May 7 – Business Leaders Forum
- Sunday, May 16 – Annual meeting of the Congregation

